

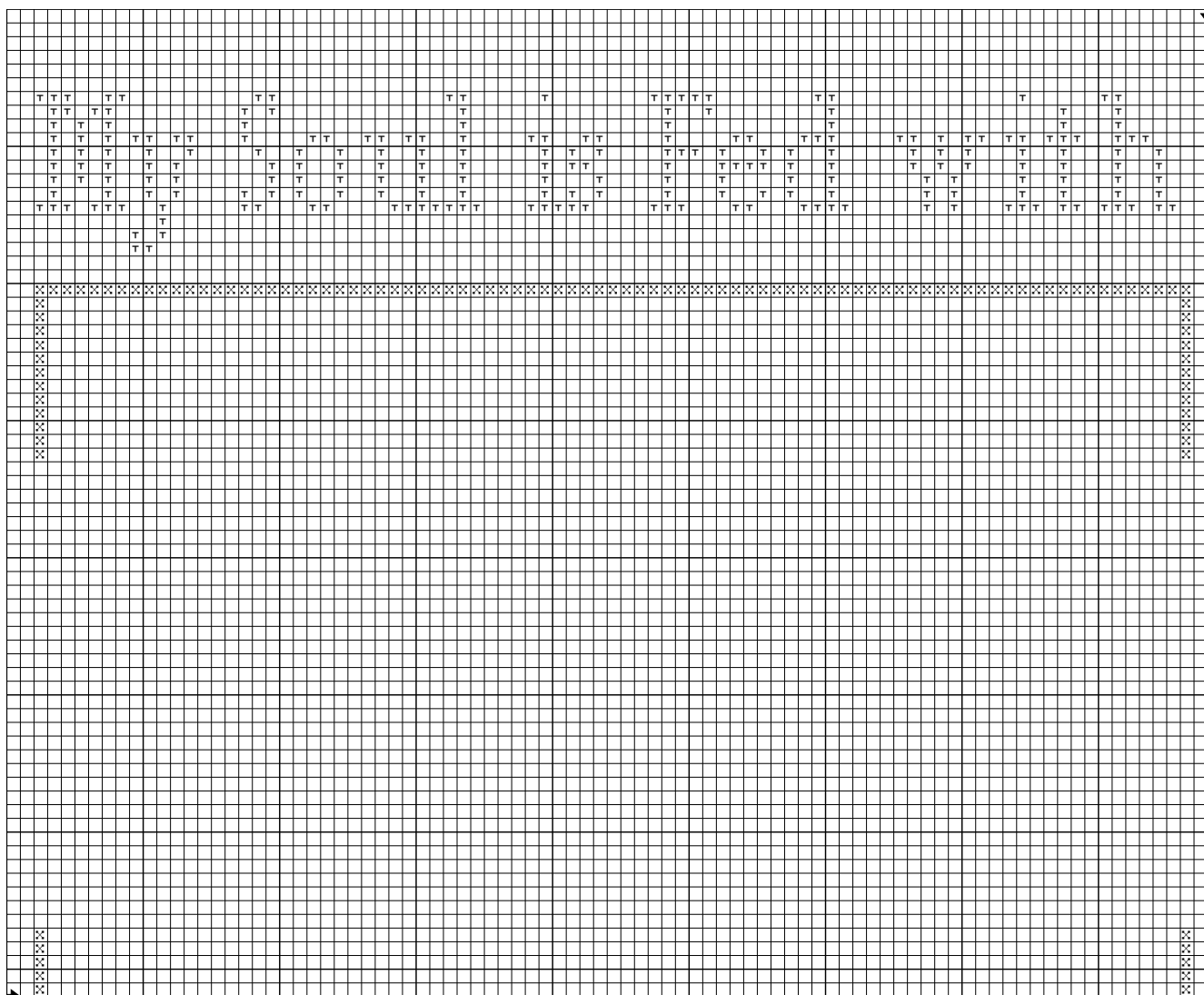
Needle & Thread Season - Border

The original model has been stitched with 2 strands of Valdani 6 ply Floss over 2 linen threads and the petite stitch 1 thread of floss over 1 thread of linen.

Stitch count: 171 X 180

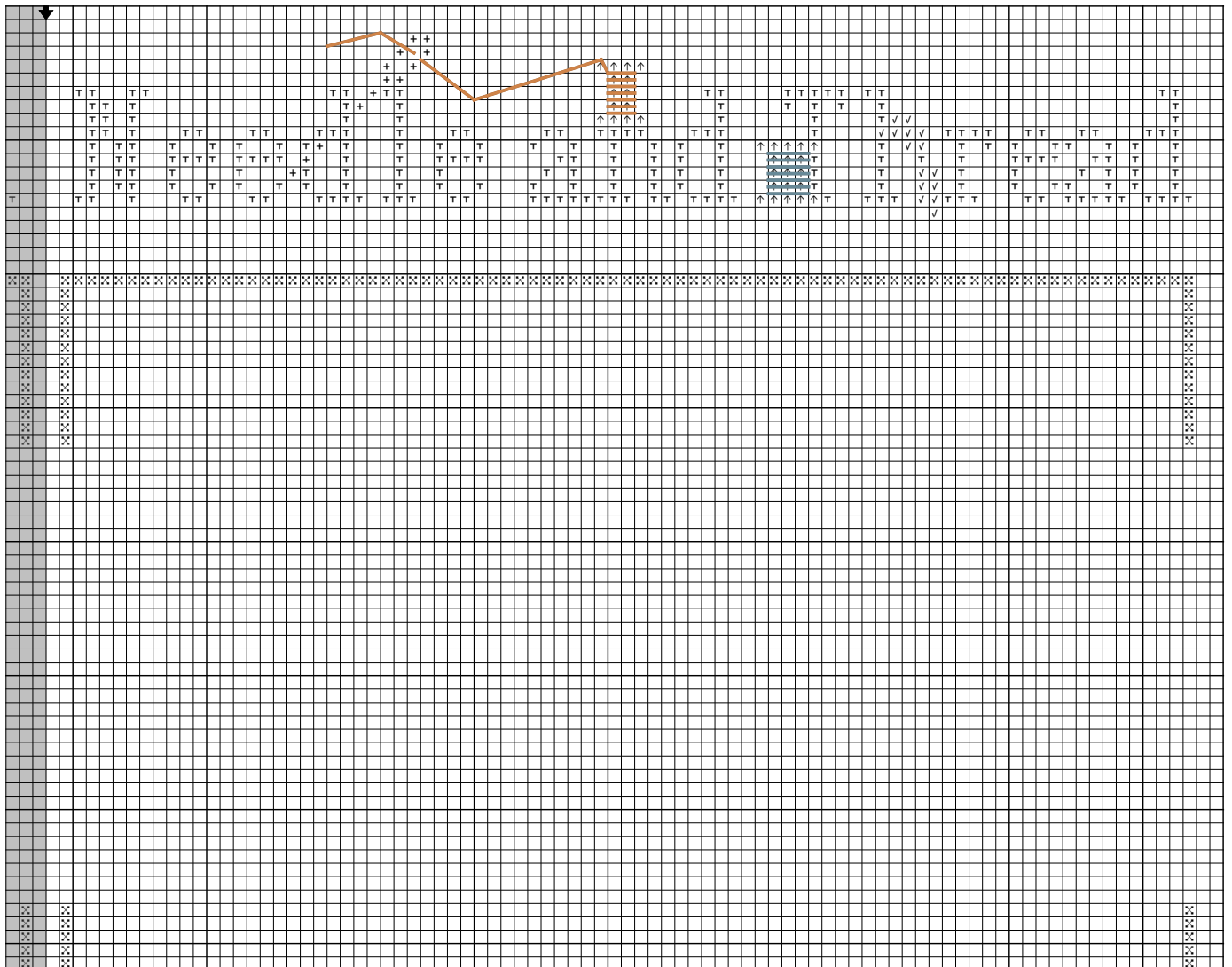
Embroidery the pattern following the diagram

A	B
C	D





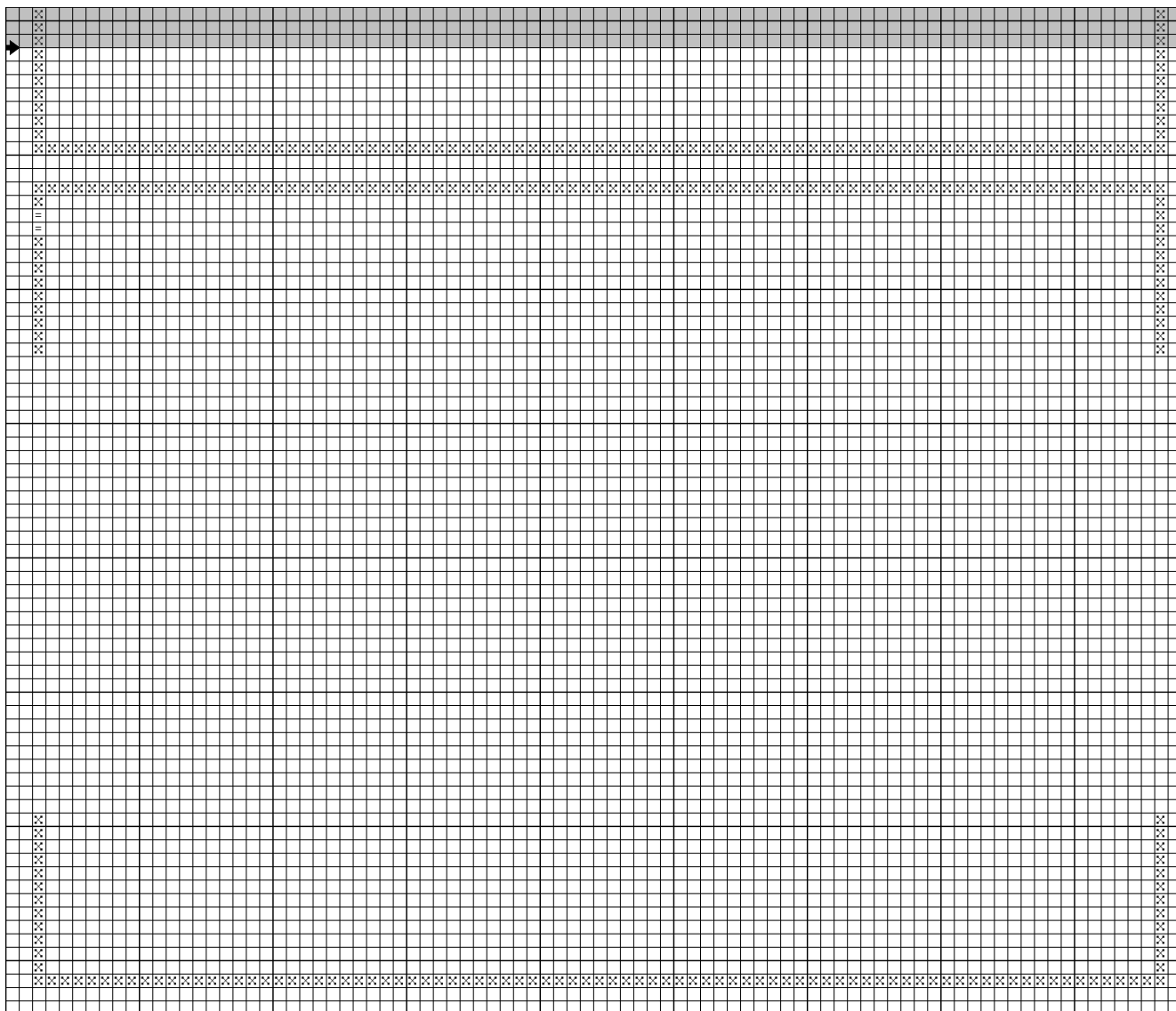
A

	Str	DMC	Color
x		221	Shell Pink-VY DK
T		310	Black
+		645	Beaver Gray-VY DK
—		931	Antique Blue-MD
↑		801	Coffee Brown-DK
√		0021	Alizarin-LT
—		3776	Mahogany-LT
=		434	Brown-LT



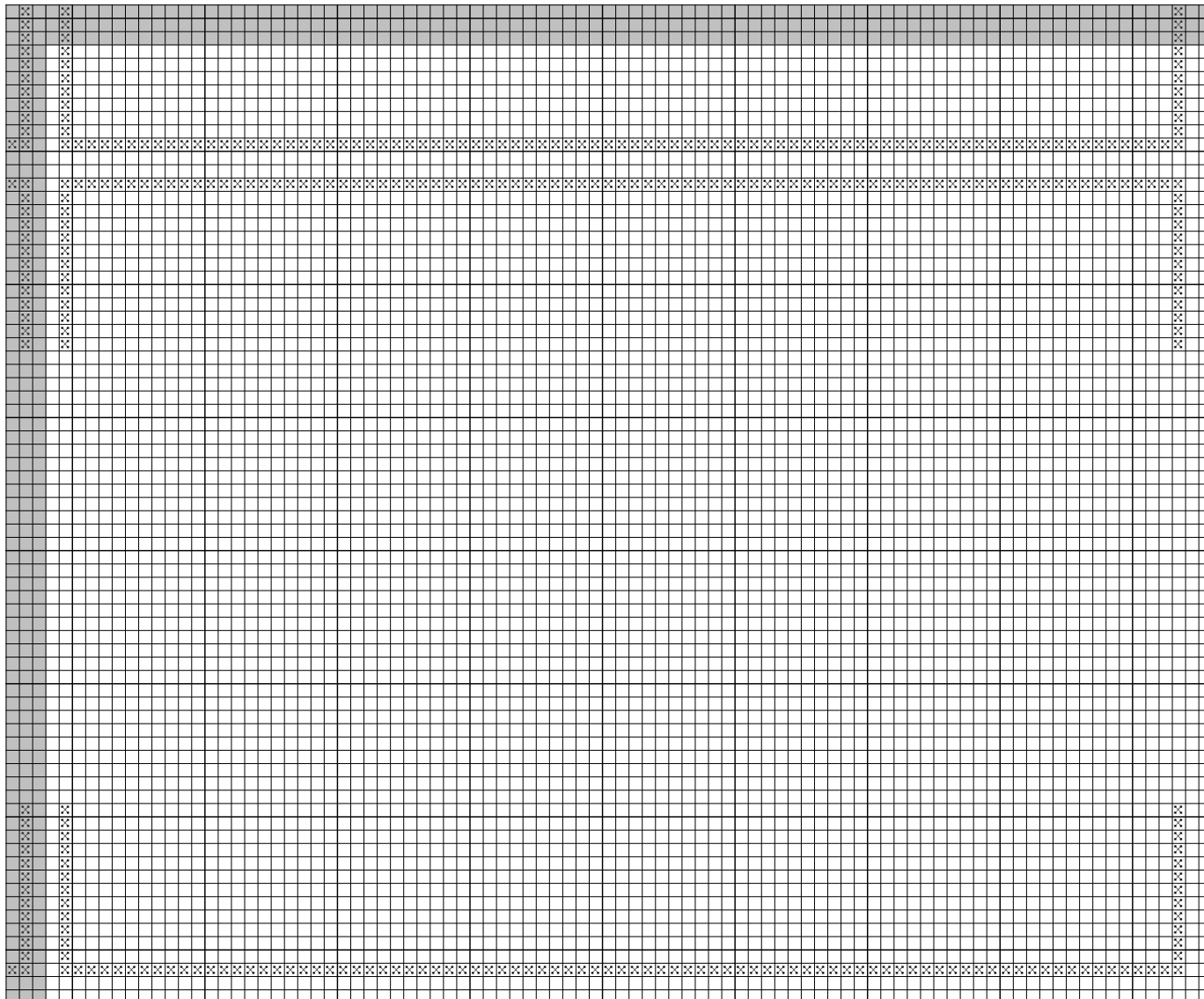
B

	Str	DMC	Color
×		221	Shell Pink-VY DK
T		310	Black
+		645	Beaver Gray-VY DK
		931	Antique Blue-MD
^		801	Coffee Brown-DK
v		0021	Alizarin-LT
		3776	Mahogany-LT
=		434	Brown-LT



C

Str	DMC	Color
×	221	Shell Pink-VY DK
⊥	310	Black
+	645	Beaver Gray-VY DK
	931	Antique Blue-MD
↑	801	Coffee Brown-DK
√	0021	Alizarin-LT
	3776	Mahogany-LT
=	434	Brown-LT



D

	Str	DMC	Color
×		221	Shell Pink-VY DK
T		310	Black
+		645	Beaver Gray-VY DK
—		931	Antique Blue-MD
↑		801	Coffee Brown-DK
√		0021	Alizarin-LT
—		3776	Mahogany-LT
=		434	Brown-LT